



Level Monitor III

Start and stop equipment automatically.

DMC's Level Monitor III starts and stops equipment automatically as grain depth increases and/or decreases.

Used for bin full sensing or pit empty applications or it may be adapted to a multitude of other equipment including augers, legs, conveyors, and dryers.

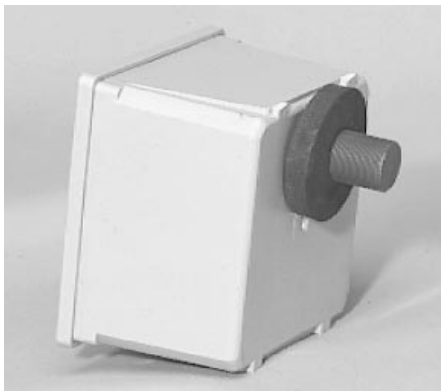
Utilizing capacitance sensing, the Level Monitor III from DMC contains no moving part by utilizing a proximity switch. Unlike some monitors, this device is not accidentally, triggered by dust, momentary power loss, or momentary loss of grain.

Included in the Level Monitor III is a standard 5 amp relay that allows you to control lights, bells, alarms, augers, legs and conveyors.

Designed for on-farm and/or commercial environments, the level Monitor III, comes with a one year limited warranty.



Level Monitor III



Level Monitor III sensor



161 DOAN ST. • BOX 825 • WILMINGTON, OHIO 45177-0825
BUSINESS PHONE: (937) 382-3501 • FAX: (937) 382-6950

Corporate Office & North Central Sales Center

1600 12th Street Northeast
Mason City, IA 50401
515-423-6182
fax 515-423-8238

Dakota Distribution

3520 9th Ave. Southwest
Watertown, SD 57201
605-882-3210
fax 605-882-3211

Fort Wayne Distribution

310 North Taylor Road
Garrett, IN 46738
219-357-5767
fax 219-357-4699

Nebraska Distribution

210 1st Street
Hampton, NE 68843
402-725-3511
fax 402-725-3513

Illiana Distribution

West Main
Oakland, IL 61943
217-346-3116
fax 217-346-3208

Southern Distribution

11523 Highway 70
Proctor, AR 72376
870-732-4962
fax 870-732-4966